



MULTI TORQUE INDUSTRIES

1300 726 525

NAPCO GEAR PUMP ENGINEERING AND PERFORMANCE DATA

The following pump data was tested with water (specific gravity 1.0). Consult NAPCO for specific pump size and speed recommendations for your application. Higher viscosity liquid products may require a lower pump RPM to achieve the desired GPM and discharge pressures.

PUMP RPM	DISCHARGE PRESSURE	CAPACITY GPM		BRAKE HP	
ALL	ALL	2"	3"	2"	3"
190	10	69	104	.65	.98
190	30	65	97	1.8	2.7
190	50	64	95	3.2	4.5
190	70	62	93	4.0	6.2
190	100	60	89	5.7	8.4
280	10	105	158	.99	1.5
280	30	98	147	2.7	4.2
280	50	97	145	4.7	6.9
280	70	95	142	6.3	9.4
280	100	93	140	8.7	13.4

BORE  **BOSS**

POLY  **BOSS**

MiTi  **PUMPS**

MiTi  **BLAST**

Contacts:

Sales - sales@multitorque.com
Accounts - accounts@multitorque.com
Web - www.multitorque.com

Queensland
Unit 5, 222 Mount Crosby Rd
Tivoli, 4305
Contact: 07 3812 9302

Western Australia
Unit 2, 40 Inspiration Dr
Wangara, 6065
Contact: 08 9302 2400

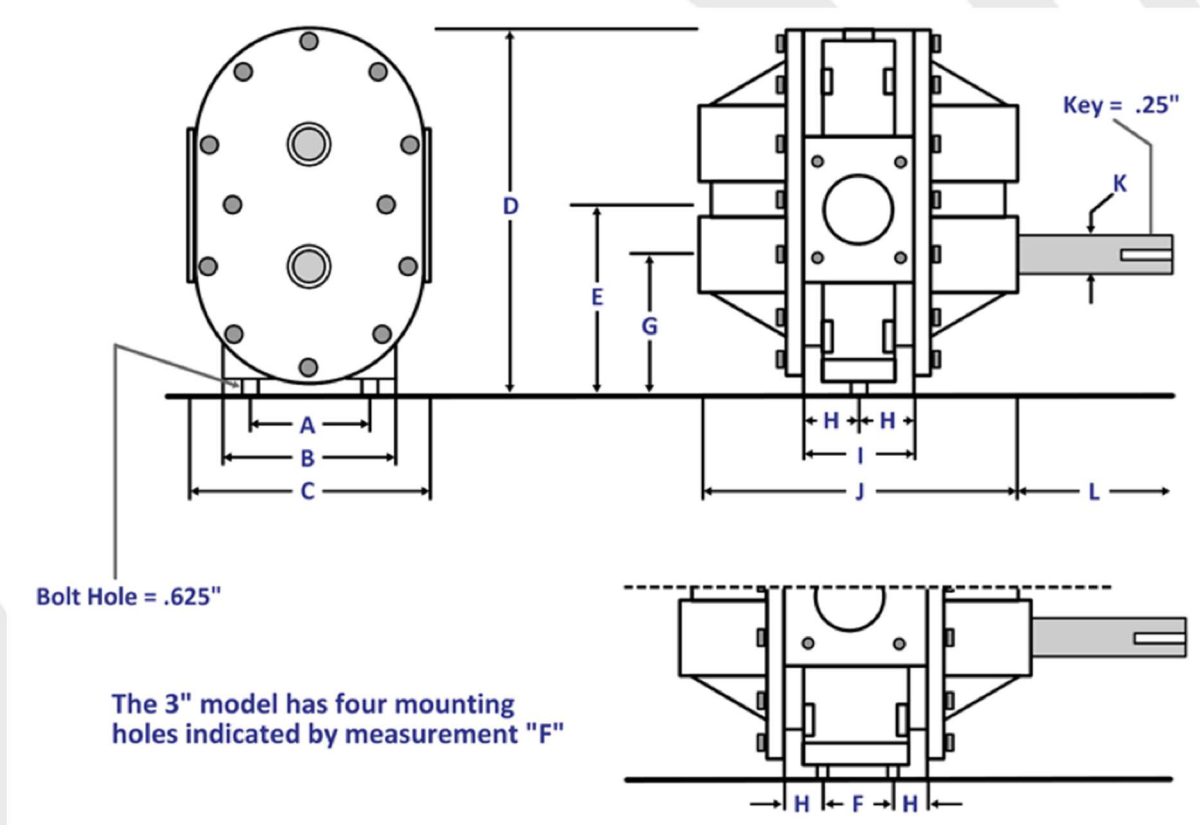


MULTI TORQUE INDUSTRIES

1300 726 525

DIMENSIONAL DATA

	A	B	C	D	E	F	G	H	I	J	K	L
2"	4.25	6.25	8.38	12.75	6.63	3.63	4.625	2.0	4.0	12.0	1.125	4.50
3"	4.37	6.25	8.38	12.75	6.63	3.63	4.625	1.187	6.0	14.0	1.125	4.50



BORE  **BOSS**

POLY  **BOSS**

MiTi  **PUMPS**

MiTi  **BLAST**

Contacts:

Sales - sales@multitorque.com
 Accounts - accounts@multitorque.com
 Web - www.multitorque.com

Queensland
 Unit 5, 222 Mount Crosby Rd
 Tivoli, 4305
 Contact: 07 3812 9302

Western Australia
 Unit 2, 40 Inspiration Dr
 Wangara, 6065
 Contact: 08 9302 2400



MULTI TORQUE INDUSTRIES

1300 726 525

IDENTIFICATION CHART

In addition to the NAPCO Spare Part Repair Kits and Gear Assemblies discussed above, a customer may also order specific spare parts from NAPCO. Please consult the blow-out diagram below to identify the specific part needed, including name and identification number. Many parts are available in ductile iron or stainless steel material. Ductile iron parts have a "C" letter in their part number. Stainless steel parts have an "S" letter in their part number.

DESCRIPTION	PART NUMBER	REFERENCE NUMBER	NUMBER PER PUMP
3" PUMP	PA300C or PA300S		
3" Service Kit	PK300C or PK300S		
Idler Shaft	PM304C or PM304S	4	1
Drive Shaft	PM303C or PM303S	3	1
Pump Housing 3"	PM0301C or PM0301S	1	1
Driver Gear 3"	PM306N	9	1
Idler Gear 3"	PM306N	9	1
Port Bolt	5/8-11 x 1.5" hex bolt C or S	16	4
Port Gasket	PB316	14	2
COMMON PARTS			
Bearing Housing/Side Cover	PM002C or S	2	2
Set Screw	NAP- 1/4-2.8 x .5snss	5	2
Gasket .016"	PM007G02	7	4
Gasket .008"	PM007G01	7	3
Roller Bearing	PM038	8	4
Seal Low Pressure	PM037	10	4
Seal High Pressure	PM036	11	4
Side Cover Bolt	3/8-16 x 1.25" hex bolt C or S	17	24

BORE  **BOSS**

POLY  **BOSS**

MiTi  **PUMPS**

MiTi  **BLAST**

Contacts:

Sales - sales@multitorque.com
Accounts - accounts@multitorque.com
Web - www.multitorque.com

Queensland
Unit 5, 222 Mount Crosby Rd
Tivoli, 4305
Contact: 07 3812 9302

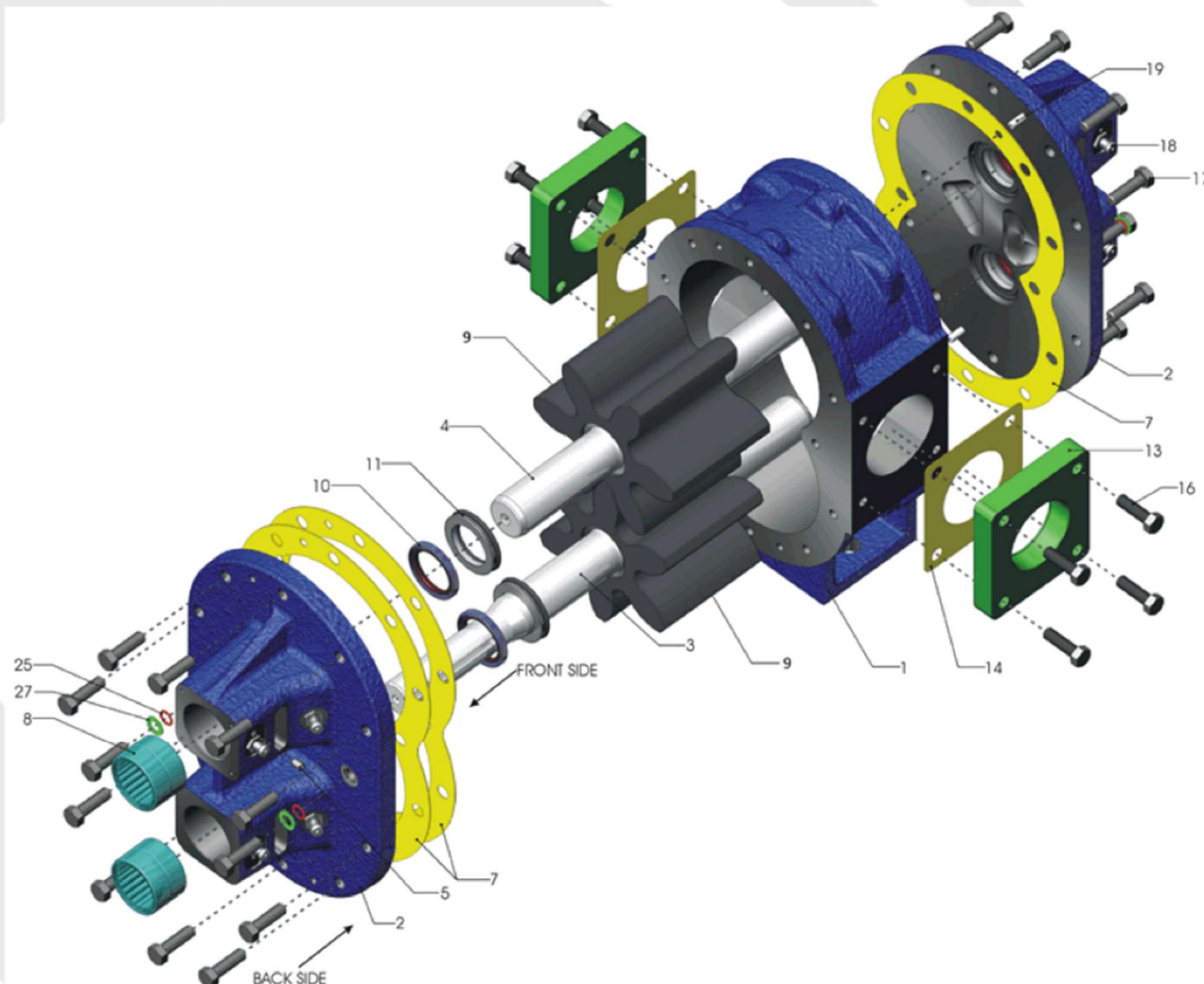
Western Australia
Unit 2, 40 Inspiration Dr
Wangara, 6065
Contact: 08 9302 2400



MULTI TORQUE INDUSTRIES

1300 726 525

Grease Nipple ss	H1610S	18	8
Aligning Pin	PM42	19	2
O-ring	PB43	25	4
Backing Washer	PM226	27	4



BORE  **BOSS** **POLY**  **BOSS** **MiTi**  **PUMPS** **MiTi**  **BLAST**

Contacts:

Sales - sales@multitorque.com
Accounts - accounts@multitorque.com
Web - www.multitorque.com

Queensland
Unit 5, 222 Mount Crosby Rd
Tivoli, 4305
Contact: 07 3812 9302

Western Australia
Unit 2, 40 Inspiration Dr
Wangara, 6065
Contact: 08 9302 2400